



IML-RESISTOGRAPH PD-Series IML PowerDrill®

Uncompromisingly precision
for all applications

(Status 08/2011)



IML-RESISTOGRAPH PD-Series

Electronic instrument for demanding applications with individual special options

Safety with system

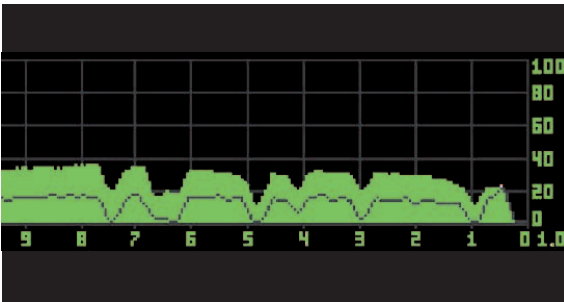
The IML-RESISTOGRAPH PD-Series (IML PowerDrill®) for all applications

Advantages on a view:

- Rugged aluminum grip housing with integrated system guidance
- Electronics are protected in waterproof housing
- Integrated 45° adapter for individual application on trees and timber structures
- Exchangeable 18V Li-Ion battery
- Replaceable drill bit guide with newly designed telescope guidance
- Durable and smooth running driving screw
- Adjustable feed speed up to 250 cm/min
- Adjustable rotation speed of the drilling needle up to 5000 rpm
- Automatic or manual change of the drilling needle
- Simultaneous recording of the drilling resistance & feed speed measuring curve
- USB and Bluetooth interface
- Extended options & additional modules are available

Technical data:

- Drilling depths: 200 mm up to 1000 mm
- Drive unit: Lithium-Ions battery
- Result: Electrical measuring data storage
option: Bluetooth printer
- Resolution: 0.02 mm/300mm
- Feed stages: 5 free selectable feed stages
15 cm/min up to 250 cm/min
- Needle speed stages: 5 free selectable rotational speed stages
of the drilling needle
1000 rpm up to 5000 rpm



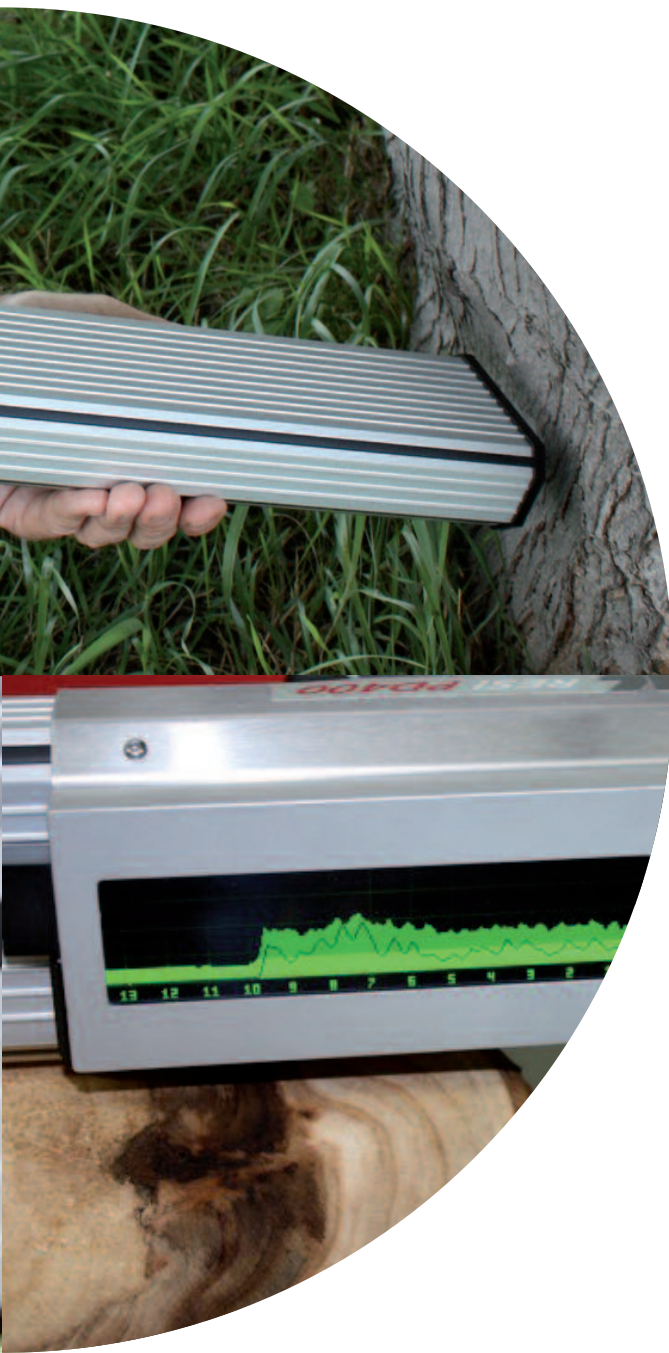
Additional modules & options:

- Memory enlargement up to 50, 100 or 180 meters recording length of the measuring curves
- Tilt sensor
- Scaling package
- Drilling needle breakage detection
- Access control
- Remote control interface



IML PowerDrill®

Electronic unit & analysis software



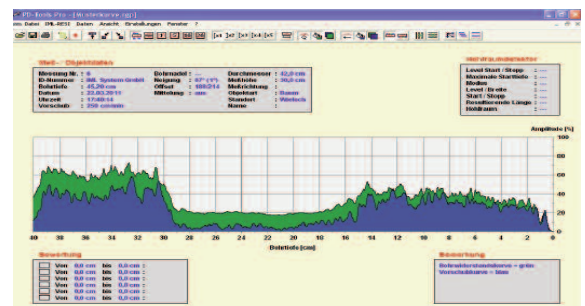
Electronic unit Explicit results for reliable evaluations

The display includes the following data:

- Drilling resistance measuring curve and feed speed measuring curve (additional module)
- Feed stage & feed speed
- Number of stored measurements
- Remaining free memory
- ID number / remark
- Drilling angle (tilt sensor - additional module)
- Drilling depth pre selection
- Needle speed stage & needle speed (additional module)
- Status bar: date, time, battery indicator, connection

IML Software Center PD-Tools / PD-Tools Pro Expanded software modules

- Standard software PD-Tools
Standard functions:
 - Configuration
 - Transmission
 - Printing-out in general views
- Expanded software PD-Tools Pro
Standard functions
 - Export, average, print-out
 - Cavity detector
 - Annual ring analysis
- Additional module 'Pole Inspector' (+ PD-Tools Pro)
 - Automatic analysis for pole inspections



IML PowerDrill® is a registered trademark of IML-Instrumenta Mechanik Labor GmbH, Germany.



Experience and know-how of the experts Seminars & workshops worldwide

Safety and service

IML is the leading manufacturer of testing and measuring instruments for trees and timber structures and offers a unique combination of wood-functional and device-related expertise.

- Service inspection and calibration
- Customer service worldwide
- TÜV certified quality and guarantee



Technical knowledge Intensive courses & trainings

Learn about the functions, the measurement methods and the technical use and profit from the correct use of the instruments as well as the correct interpretation of your measurement values.

- Intensive courses for professional use of our instruments
- Interpretation and evaluation of measurement profiles
- Individual seminars, workshops and in-house trainings



IML, Inc.

165 Wells Road, Suite 201
Orange Park FL, 32073
USA

Local: 1-904-375-0161
Fax: 1-904-375-9079

info@imlusa.com
www.imlusa.com

www.imlusa.com