

Product News - Available now!

New

IML-RESISTOGRAPH PD-Series

Uncompromising precision for all wood testing applications



IML-RESISTOGRAPH PD-Series

- Available drilling depths: 200 mm up to 1.000 mm
- Feed speed 250 cm/ min
- Rugged aluminum housing with integrated system guidance
- Electronic is protected in waterproof high quality stainless aluminum housing
- High resolution 0,02 mm/ 300 mm
- Integrated 45°-adapter for individual application on trees, wood poles and other timber structures
- Durable and smooth running ball bearing driving screw
- Exchangeable 18V Li-Ion battery
- Replaceable drill bit guide with newly designed telescopic guidance
- USB and Bluetooth interface
- Long range Bluetooth radio
- Extended options due to modular construction

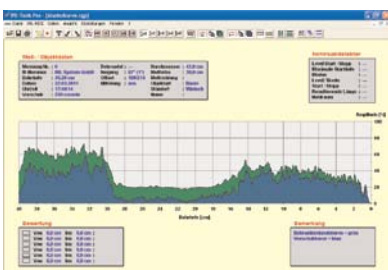
IML-RESISTOGRAPH PD-Series

Scope of delivery (standard):

- Instrument PD with 1 mounted drilling needle, 1x quick-battery charger + 2x Premium Li-Ion batteries 18V 2,6 Ah, integrated 45°-adapter, USB-connection cable (USB A-plug to micro B-plug), Bluetooth USB-adapter plug, pliers, 5x drilling needles, quiver for drilling needles, transport case, Instruction manual.

- IML Software Center PD-Tools

Standard memory storage: 25 meters recording length of the measurements



Order Form

IML-RESI PD-Series (PowerDrill)



New

IML-RESI PD200 (200 mm)

- incl. scope of delivery standard

Price: \$ 6,935.00*

(Item No.: 3100900-2PD)

IML-RESI PD300 (200 mm)

- incl. scope of delivery standard

Price: \$ 7,225.00*

(Item No.: 3100900-3PD)

IML-RESI PD400 (400 mm)

- incl. scope of delivery standard

Price: \$ 7,515.00*

(Item No.: 3100900-4PD)

IML-RESI PD500 (500 mm)

- incl. scope of delivery standard

Price: \$ 7,805.00*

(Item No.: 3100900-5PD)

IML-RESI PD600 (600 mm)

- incl. scope of delivery standard

Price: \$ 8,095.00*

(Item No.: 3100900-6PD)

IML-RESI PD750 (750 mm)

- incl. scope of delivery standard

Price: \$ 8,530.00*

(Item No.: 3100900-7PD)

* Delivery and payment conditions:

Prices are without any accessories. All above mentioned prices are net prices. The prices do not include packing, transportation and insurance expenses. All prices are exclusive of VAT and/or any taxes (duties, custom charges...) and are quoted ex works. The prices are mentioned per item in US dollar if not otherwise stated. IML's general terms of delivery and payment will apply.

Order

Delivery address

Please fill out and fax to:

678-819-3661

Company:	
Department:	
Name:	
Address:	
Zip Code/City:	
Email:	

IML, Inc.

1301 Shiloh Road, Suite 210
Kennesaw, GA-30144

Toll Free: 800-815-2389

Local: 678-819-2030

Fax: 678-819-3661

info@imlusa.com

www.imlusa.com